



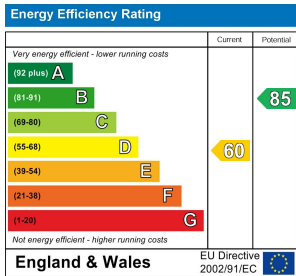
Saddlescombe Way, Woodside Park, N12 7LS
£3,250 Per Calendar Month Council Tax Band F

REAL ESTATES
Est.1981

Estate Agents · Residential Sales · Investments · Lettings

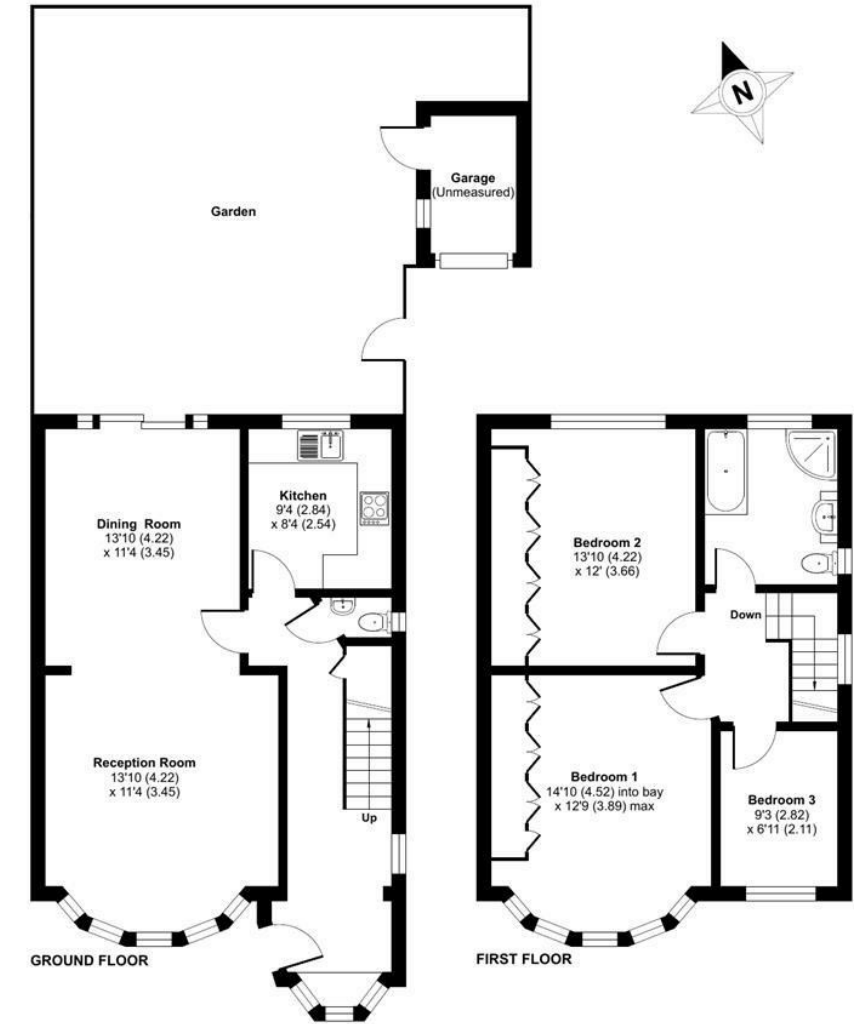
****AVAILABLE 18 OCTOBER 2025**** A 3 bedroom semi-detached family home situated in this sought after close in the heart of Woodside Park, within easy reach of local shops, bus services, parkland, schools and both Woodside Park and West Finchley Northern Line tube stations.

*** THRU LOUNGE/DINING ROOM * FITTED KITCHEN * GUEST CLOAKROOM * 2 DOUBLES AND 1 SINGLE BEDROOM * FITTED WARDROBES * BATHROOM/WC * REAR GARDEN * GARAGE * OWN DRIVEWAY * AVAILABLE NOW * FURNISHED ***



Saddlescombe Way, London, N12

Approximate Area = 1161 sq ft / 107.8 sq m(excludes garage)
For identification only - Not to scale



Floor plan produced in accordance with RICS Property Measurement Standards incorporating International Property Measurement Standards (IPMS2 Residential). © nichecom 2023. Produced for Real Estates. REF: 984665